

ABC Owned Stations Automated DSNG Project

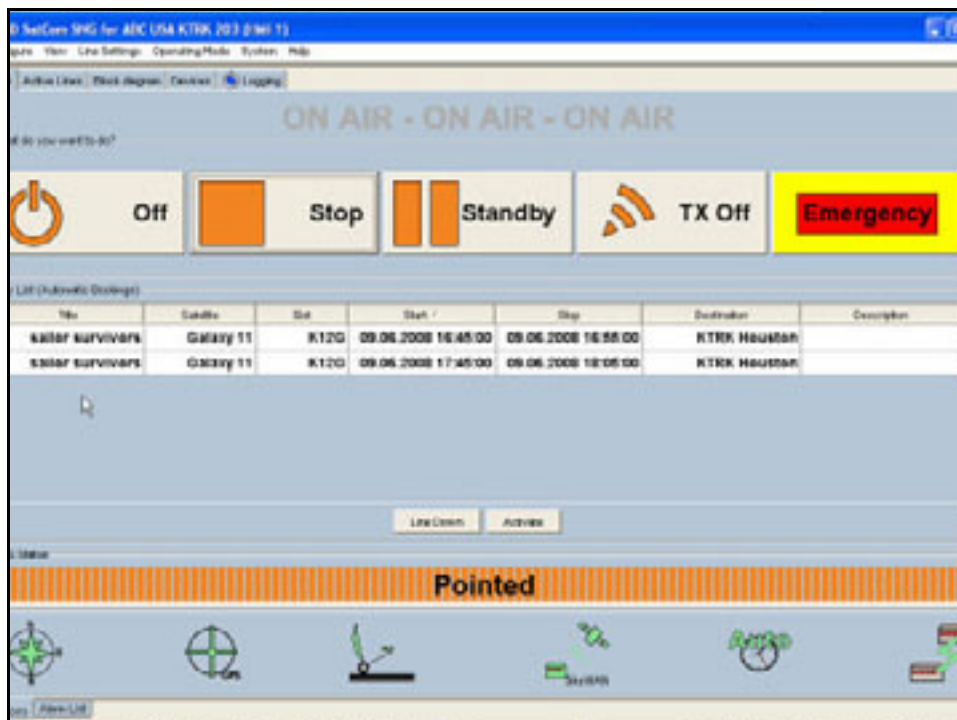


ND Satcom

- 13 Trucks Currently in service
- 2 Trucks currently on order
- 7 Fixed Terminals
- 6-8 Trucks per year planned
- Trucks built HD ready
- IPOS via TDMA carrier
- Live video via DVB carrier

ND Satcom

- Control/scheduling system integrated with Schemall Schedulelink
- One button operation
- Photographers operate all trucks
- Trilogy VOIP planned for all trucks
- First Dual-Thread Truck nearing completion
- Automatic Power control of all carriers
- Most trucks are Hybrid DSNG/ENG



750 500 1000 1000 1000

Home Search Favorites

http://192.168.1.104:8080/ScheduALL/4/20/04/04/2008-08-Board.aspx

ScheduALL Status Board

Version 4.62 8/1/08
ABC News 4800T
Logout

Resource Group: 41 - OTVS Upstiks

Hide 'Not Connected' Options Refresh

Resource	Connection Status	Equipment Status	Bookings Received	Transmission Status
KGO 9 ND Satcom Van - Path 1 (Digital)	Not Connected			
KGO 18 ND Satcom Van - Path 1 (Digital)	Not Connected			
KGO 24 ND Satcom Van - Path 1 (Digital)	Not Connected			
KTRK 202 ND Satcom Van - Path 1 (Digital)	Not Connected			
KTRK 203 ND Satcom Van - Path 1 (Digital)	Not Connected			
WABC 2 ND Satcom Van - Path 1 (Digital)	Connected	Operational	2 of 2	On Air
WABC 4 ND Satcom Van - Path 1 (Digital)	Connected	Warning		
WABC 7 ND Satcom Van - Path 1 (Digital)	Disconnected			
WABC 12 ND Satcom Van - Path 1 (Digital)	Not Connected			

Station warning: 1/28/2008 4:36:29 PM

4 Resources (40) Windows (4/0) Auto Refresh every 2 seconds Last Refresh at 11:04:20

4 Stations Media File Manager (1/10/1)

pure Operating Mode Settings Help

New Stations Transmissions Chart Map

Map Settings
Google Maps
Print Config
Map & Print

Stations

- WABC New York
 - Type: PTSD
 - Status: OK
 - Longitude: -73
 - Latitude: 40.75
 - Not On Air
 - ESN: 5.0894
 - Course: 211.7
- WABC 2 ND Satcom Van
 - Type: MOBILE
 - Status: OK
 - Longitude: -81
 - Latitude: 34.00
 - Not On Air
 - ESN: 43.5484
 - Course: 206.7

Device	Message text	Occupied	Disappeared	Acknowledge	Delete

