

NETWORKED PRODUCTION

OR HOW TO EXTEND YOUR STUDIO TO THE SIZE OF YOUR NETWORK

FELIX POULIN, TECHNOLOGY & INNOVATION, EBU
WBU/ISOG AT EBU, GENEVA, 19 NOVEMBER 2014

WHAT I WILL SAY

Major **shift** in production system **architecture**

Enable **remote** and **distributed** workflows

Are **contribution networks** ready?

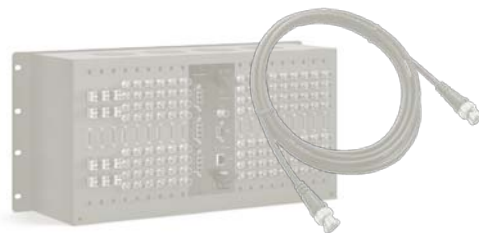


"REPLACING SDI BY IP"

Unified **live** & file-based production...



... all over **standard IT** infrastructure ...

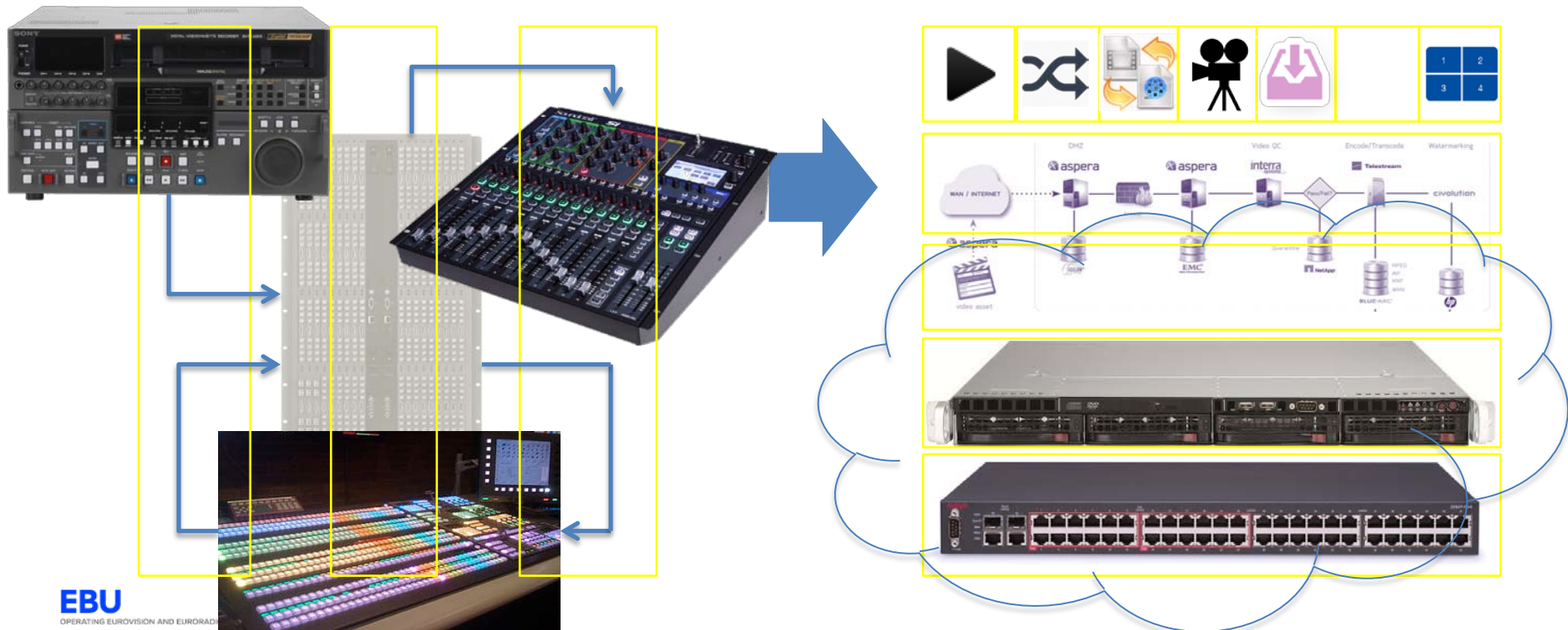


... **replacing** speciality equipment

SHIFT FROM SILOS TO PLATFORMS (FOR MR. MRS. EVERYONE)



SHIFT FROM SILOS TO PLATFORMS (FOR US)



STUDIO WALLS = THE SIZE OF YOUR NETWORK!

Camera and audio feeds

Intercoms

Teleprompter

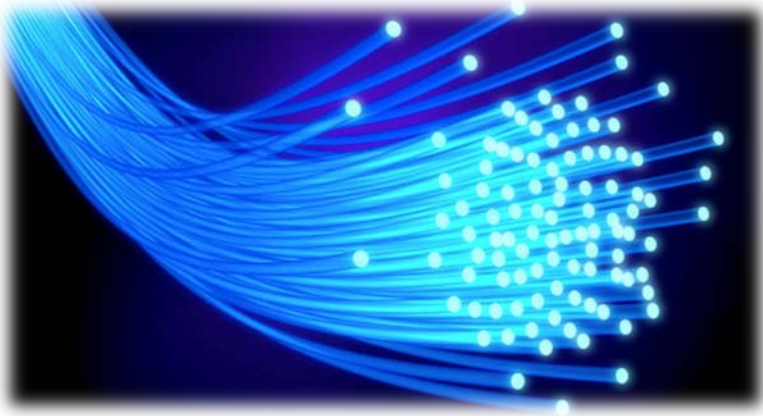
Light control

Device control

Time & Sync



ARE CONTRIBUTION NETWORKS READY?



+Time & Sync

μ Second accuracy

+Latency (end-to-end)

<50 ms

Constant (including in case of failover)

+Bandwidth: Guaranteed

20 x HD: 4 Gbit/s ⁽¹⁾

20 x UHD: 25 Gbit/s ⁽²⁾

+At feasible cost!

SHARING EARLY EXPERIENCE



EBU SP-Future Networked Systems

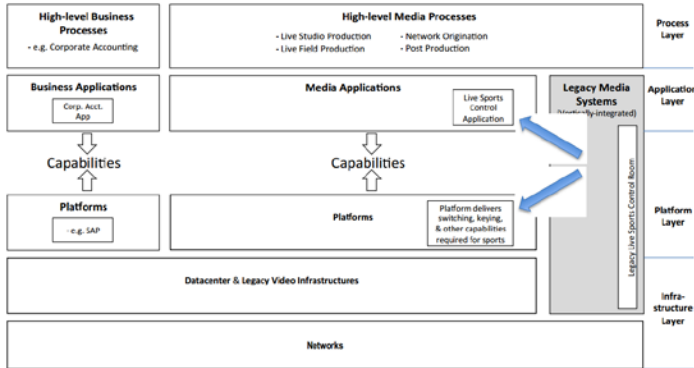
μWorkshops

- Remote Production
- Uses Cases
- IP Device Control & Management
- More to come...

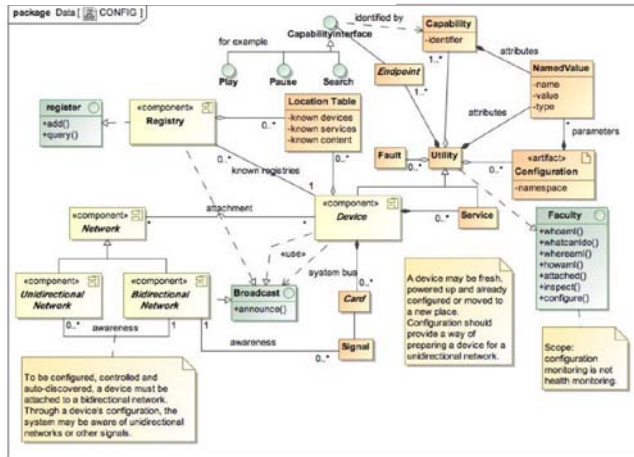
Network Technology Seminar (June)

tech.ebu.ch/FNS

DEVELOPING A REFERENCE ARCHITECTURE



High-level system view diagram



Joint Task Force on Networked Media

Next Interim report December 2014

RA v1.0 Q2/2015

- Models: system components, flows, data, timing, QoS,
- Common vocabulary

tech.ebu.ch/JTNM

CONCLUSIONS

Major **shift** in production system **architecture**

Enable **remote** and **distributed** workflows

Are **contribution networks** ready?



poulin@ebu.ch